

Group Registration Form

Group Name: _____

Group Address: _____

Group Leader: _____

E-mail: _____

Phone: _____

Fax: _____

Cell: _____

Number of Build Days Requested: _____

Number of volunteers/Build Day _____
(max 10/per day)

Donation Amount: \$ _____

Preferred/Selected Dates:

First Choice: _____

Second Choice: _____

I have consulted the Director of Volunteers for available dates and have reviewed the Group Participation Guidelines. I will send the appropriate donation to the HFHHC office at least one week prior to the Build Day.

Group Leader Signature: _____ Date _____

Please fax, mail or email this form to the HFHHC office. Please remember that your Build Day is **not confirmed** until you return this form and receive confirmation from HFHHC.

Thank you for your participation and support!

(Women Build)



Mailing Address
P.O. Box 2492
Myrtle Beach, SC 29578 - 2492

Office: (843)-916-8815
Fax: (843)-916-8764
www.habitatmb.org

Laurie Suprano
Assistant Executive Director / WB Coordinator
Laurie@habitatmb.org

HABITAT FOR HUMANITY OF HORRY COUNTY

**WOMEN BUILD
DONOR LEVEL
INFORMATION**

WITH YOUR SUPPORT ~ FINANCIAL &
IN-KIND ~ WE CAN MEET OUR GOAL
THANK YOU!



Habitat for Humanity of Horry County is completely reliant upon groups and individuals to help us continue our mission. Money raised will go towards building materials, paid labor and other supplies. Thank you!

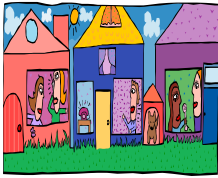
Women Build Donor Opportunities

~ Community Builder ~

Donor contributes \$5,000 or more for building costs, materials and paid labor.

Benefit to Donor:

- Website recognition w/link and logo
- T-shirts and hats for **on-site** volunteers
- Three (3) work days on site
- Donor sign/name on site
- Invitation to Thank You luncheon
- 8 x 10 framed house picture



Habitat for Humanity of Horry County will also provide:

- Project orientation
- Construction site supervision
- PR/media opportunities
- Recognition in Habitat's newsletter
- An invitation to the house blessing and dedication ceremonies
- An introduction of the partner family

~ Confidence Builder ~

Donor contributes \$2,500-\$4,999 for building costs, materials and paid labor.

Benefit to Donor:

- Website recognition w/link and logo
- T-shirts and hats for **on-site** volunteers
- Two (2) work days on site



Goal Includes title to HFHI and sponsors the construction of **TWO** Habitat homes; one in Horry County and one in Guyana! **Your support will impact both the local and global community!**

- Donor sign/name on site
- Invitation to Thank You luncheon
- 5 x 7 framed house picture

Habitat for Humanity of Horry County will also provide:

- Project orientation
- Construction site supervision
- PR/media opportunities
- Recognition in Habitat's newsletter
- An invitation to the house blessing and dedication ceremonies
- An introduction of the partner family

~ Partnership Builder ~

Donor contributes \$1,500-\$2,499 for building costs, materials and paid labor.

Benefit to Donor:

- Website recognition w/link
- T-shirts for **on-site** volunteers
- One (1) work days on site
- Donor name on site
- Invitation to Thank You luncheon
- 4 x 6 framed house picture



Habitat for Humanity of Horry County will also provide:

- Project orientation
- Construction site supervision
- PR/media opportunities
- Recognition in Habitat's newsletter
- An invitation to the house blessing and dedication ceremonies
- An introduction of the partner family

~ Family Builder ~

Donor contributes \$1,000-\$1,499 for building costs, material and paid labor.

Benefit to Donor:

- Website recognition w/link
- T-shirts for **on-site** volunteers
- One (1) work days on site
- Donor name on site
- Invitation to Thank You luncheon
- House picture note cards



Habitat for Humanity of Horry County will also provide:

- Project orientation
- Construction site supervision
- PR/media opportunities
- Recognition in Habitat's newsletter
- An invitation to the house blessing and dedication ceremonies
- An introduction of the partner family

~ Church, School and Non-Profit ~ Habitat Build Day

Churches, schools and non-profit organizations contribute \$500 and may make up to 10 of their members available for an exciting day of teambuilding on a Habitat for Humanity of Horry County home site. Donations are dedicated to building materials and other supplies.



We invite your group to join us in our ministry of building simple, decent, affordable homes for God's people in need.

Thank you!